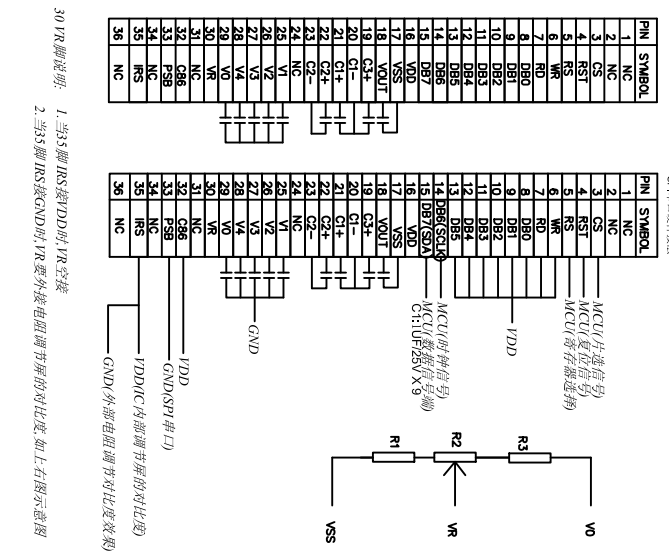
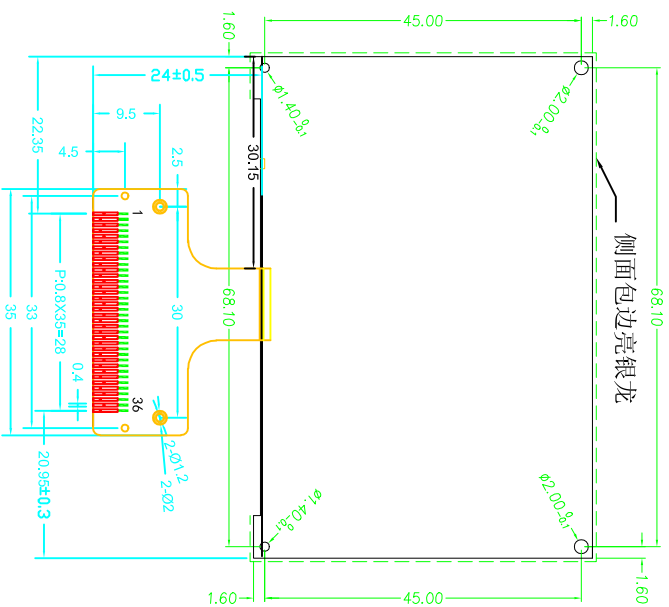
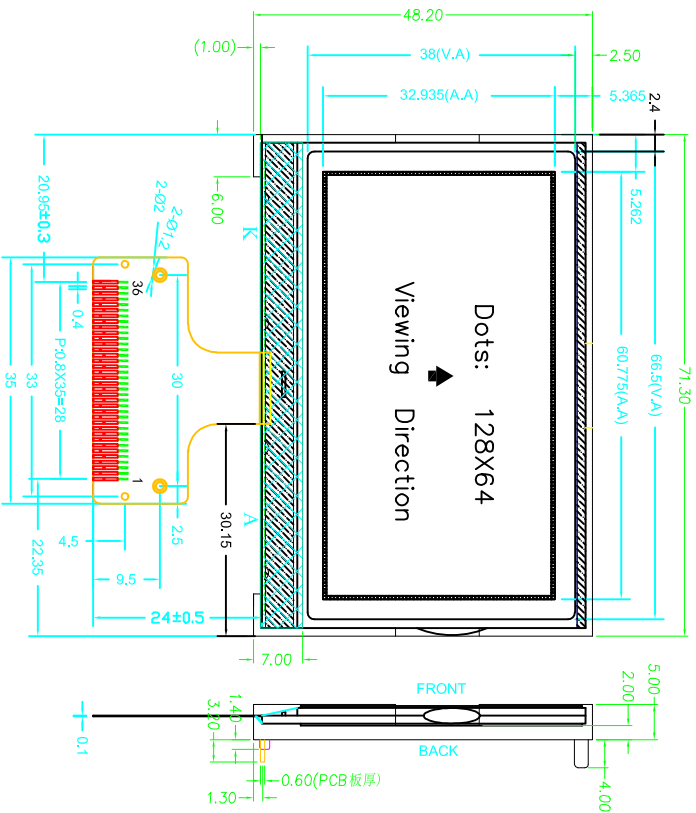
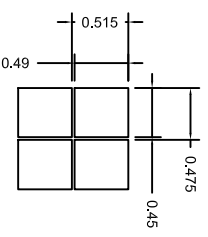
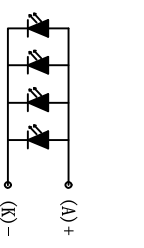


Customer approval :

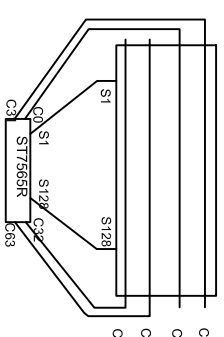


Specification:

- 1). Driving: Duty:1/64, Bias:1/9, VDD=3.3V
- 2). Viewing direction: 6 o'clock
- 3). Display mode:FSTN/POSITIVE /TRANSFLECTIVE
- 4). Operating temp:-20°C~+70°C
- 5). Storage temp: -30°C~+80°C
- 6). Control IC: ST7565R(Or Compatible)
- 7). Backlight: EDGE White LED: 3.0V 4X15MA
- 8). dimensions with mark "*" are important
- 9). All the raw materials are RoHS compliant



LCD逻辑走线



30 R脚说明: 1. 当35脚 I/O5 接VDD时, VR 空接
2. 当35脚 I/O5 接GND时, VR 要外接电阻调节对比度, 如上图示感图

REV	REVISION RECORD	DATE	MODEL NO.	SYG128649102-3C33G4UNZR-B7NCF1-EC02436	GENERAL TOL: ± 0.3
A0	First issue	04/10			
			APPROVED BY	CHECKED BY	DRAWING BY
			LSS	LGJ	KG
			PAGE?	1 OF 1	UNIT: mm
			PROJECTION		

深圳市三元晶科技有限公司
ShenZhen TCC LCD Hi-Tech Co., Ltd.

