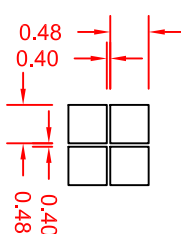
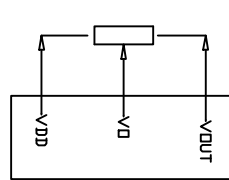
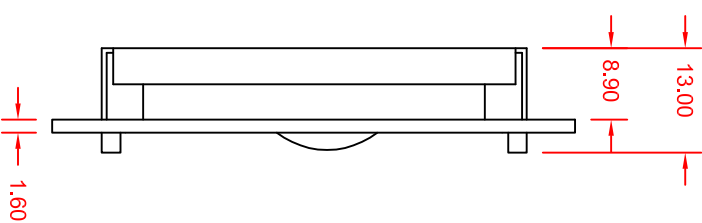
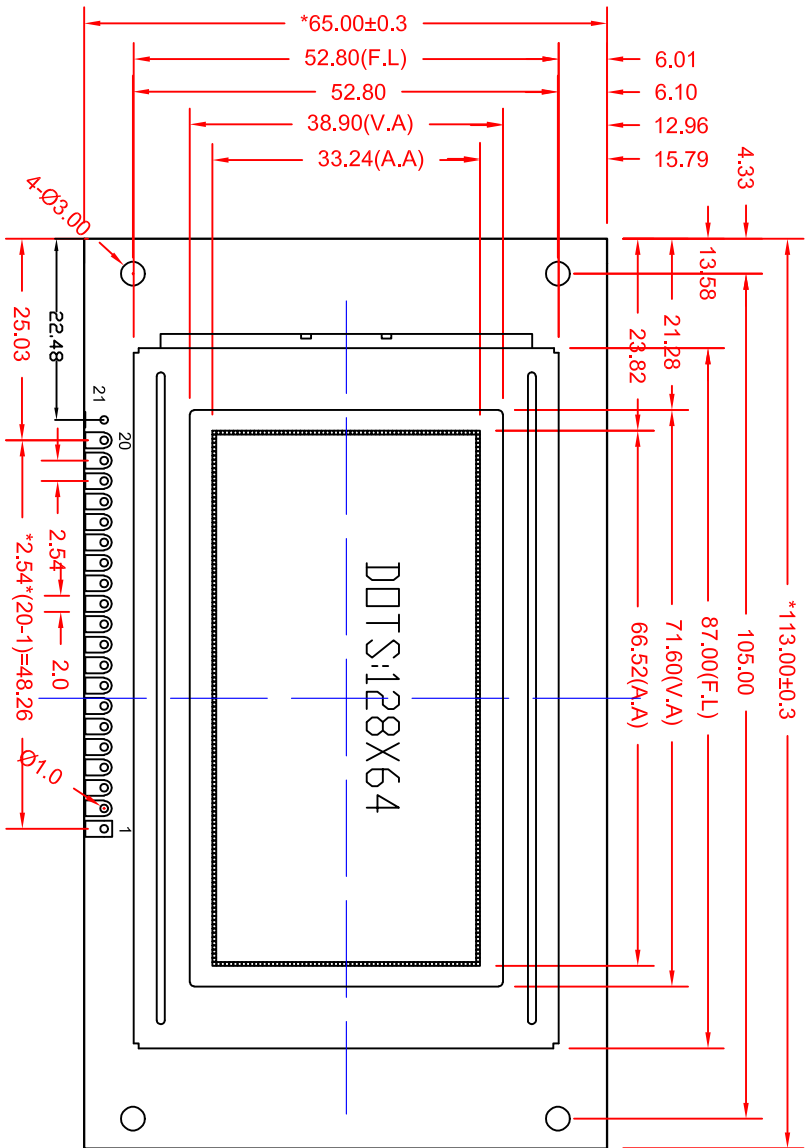


Customer approval :



PIN	Parallel-并口
1	VDD
2	VSS
3	V0
4	RS
5	R/W
6	E
7	DB0
8	DB1
9	DB2
10	DB3
11	DB4
12	DB5
13	DB6
14	DB7
15	/CS1
16	/CS2
17	/RST
18	VOUT
19	BLA
20	BLK
21	BLA

Specification:

- 1). Driving: Dost:128*64, Duty:1/64, Bias:1/9, VDD:5V, VOUT:4.9V, VO:4.2V
- 2). Viewing Direction: 6 O'clock
- 3). Display mode:STN/BLUE/TRANSFLECTIVE/NEGATIVE
- 4). Operating temp.: -20°C~+70°C
- 5). Storage temp.: -30°C~+80°C
- 5). Controller IC:KS0107,KS0108
- 6). Backlight: Edge, White,led x4, 5V, 60MA
- 7). Dimensions with mark "" are important, with mark "(" are referenced
- 8). All the raw materials are RoHS compliant

REV	REVISION RECORD	DATE	MODEL NO.	CHECKED BY	DRAWING BY	GENERAL TOL:
A	FIRST ISSUE	2015/11/06	模组型号	审核	绘图	未注公差
B			SYB12864A3V12-5C9B1N7R-B5NG	检查	Luoxian	±0.3
C			APPROVED BY	Francis	2015/11/06	PAGE: 1 OF 1
D			Liu	2015/11/06	PROJECTION	单位:mm



深圳市三元晶科技有限公司
Shenzhen TCC LCD HI-Tech Co., Ltd.

